



PRIMER ON PARTNERING

WITH GRASSROOTS
ORGANIZATIONS

IN JAMAICA



READING OWLS INTERNATIONAL
Creating Readers... for Life

PARTNERSHIP

OVERVIEW

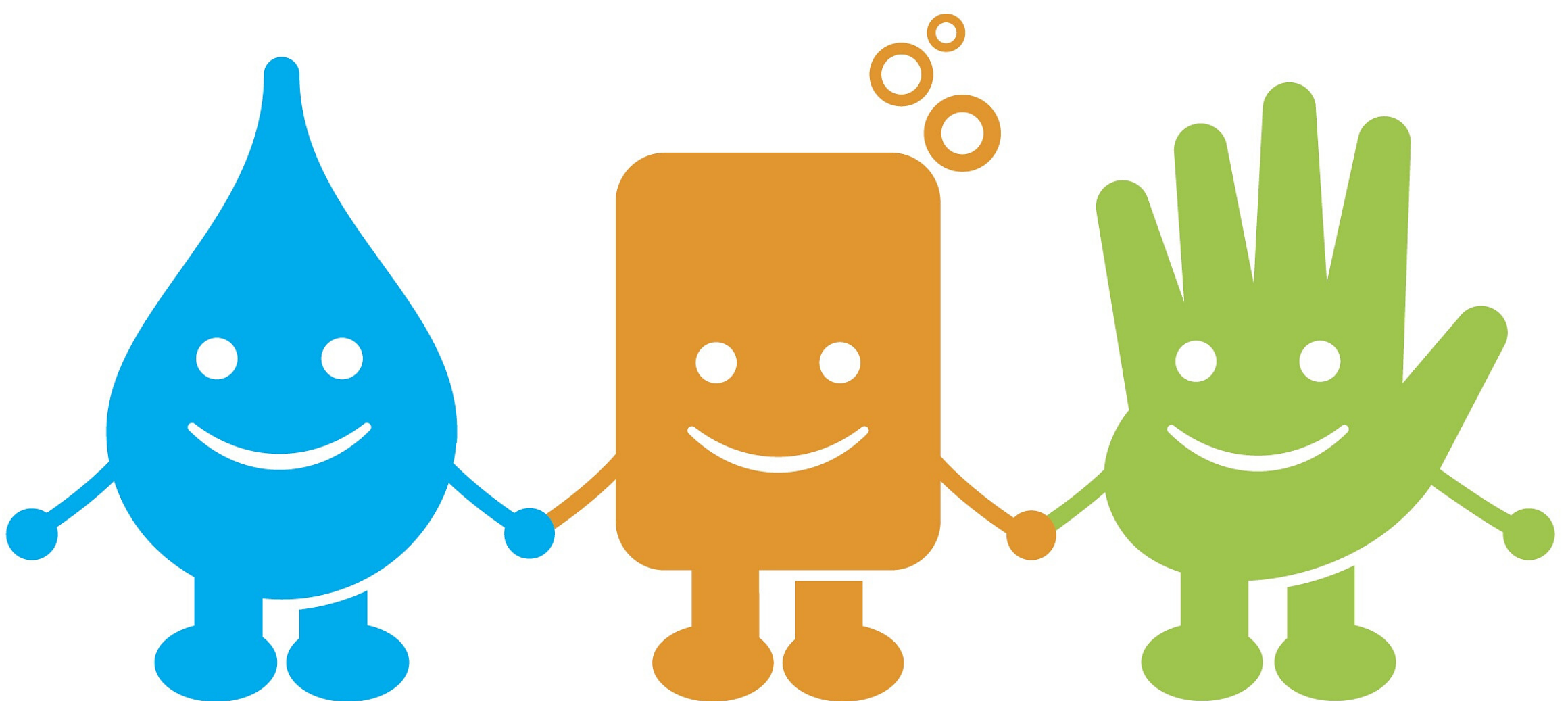
When Reading Owls invests in your organization, we ask that you become our partner in the fulfillment of our mission. A cornerstone of this partnership is helping us to meet the fiduciary and moral responsibility we owe to our donors. Donors give generously because they believe in Reading Owls' mission, and their continued support is critical to the on-going viability of our organization. To this end, it is important that we provide periodic updates that will keep them informed and engaged. This primer is intended to 1) be a guide on the ways you may enlist your help to properly steward our donors, 2) outline how we can most effectively execute on our mission. Thank you again for partnering with us to create readers for life!



“

COMING TOGETHER
IS A BEGINNING;
KEEPING TOGETHER
IS PROGRESS;
WORKING TOGETHER
IS SUCCESS.

HENRY FORD



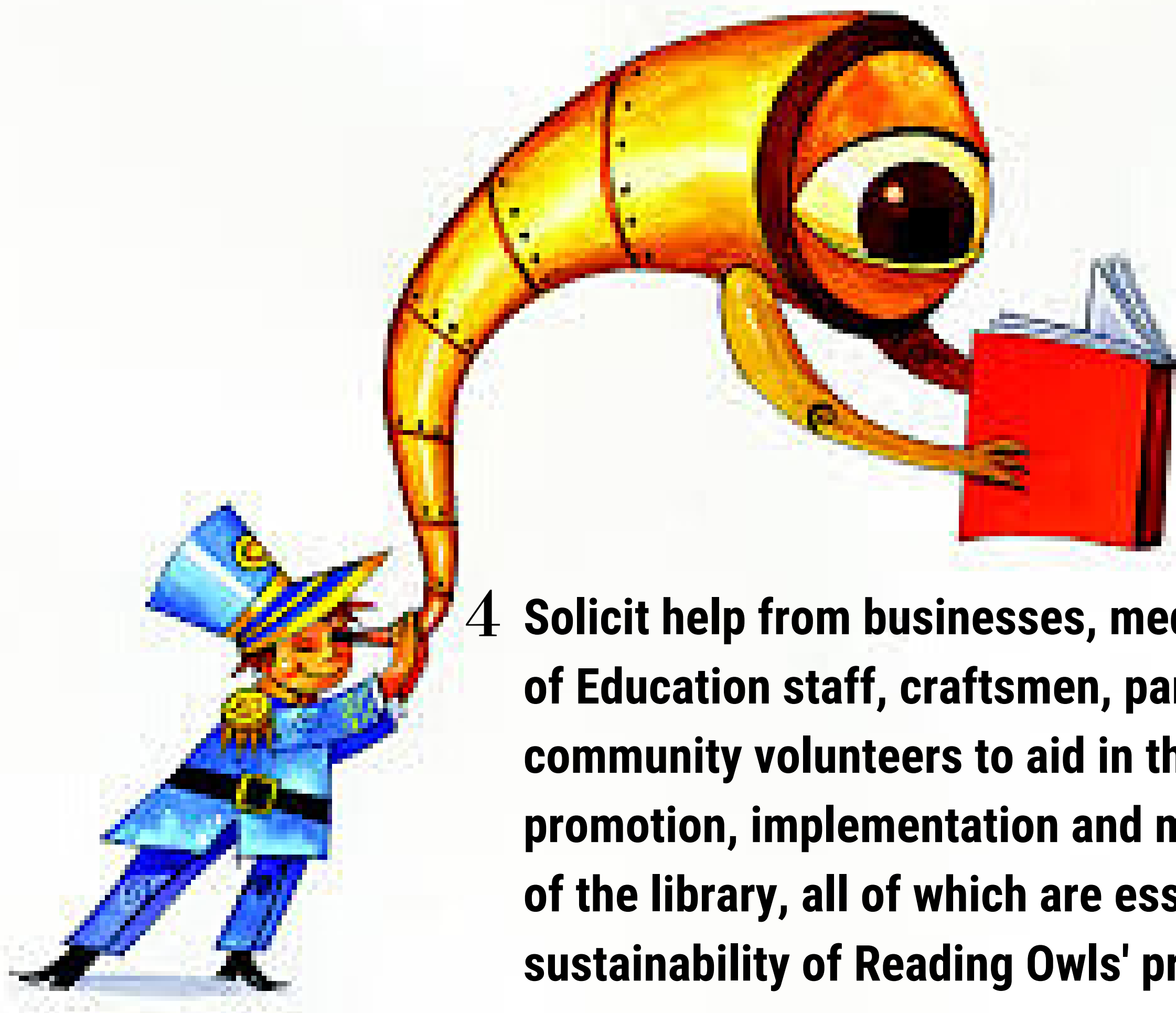
Ways you can be helpful



- 1 **Be responsive to requests for information. Requests may include: periodic updates on the library; information on a student to profile in a newsletter; information on school-wide literacy gains**

- 2 **Participate in evaluation and monitoring programs administered by or on behalf of Reading Owls**

- 3 **Provide photos of children using the library or being engaged in reading related activities**



- 4 **Solicit help from businesses, media, Ministry of Education staff, craftsmen, parents, and community volunteers to aid in the promotion, implementation and maintenance of the library, all of which are essential to the sustainability of Reading Owls' projects.**



- 5 **Write "thank you" letters to major donors either upon request or spontaneously. Letters from the children are especially powerful**

Ways you can be helpful

6 Participate in library training and development administered by or on behalf of Reading Owls

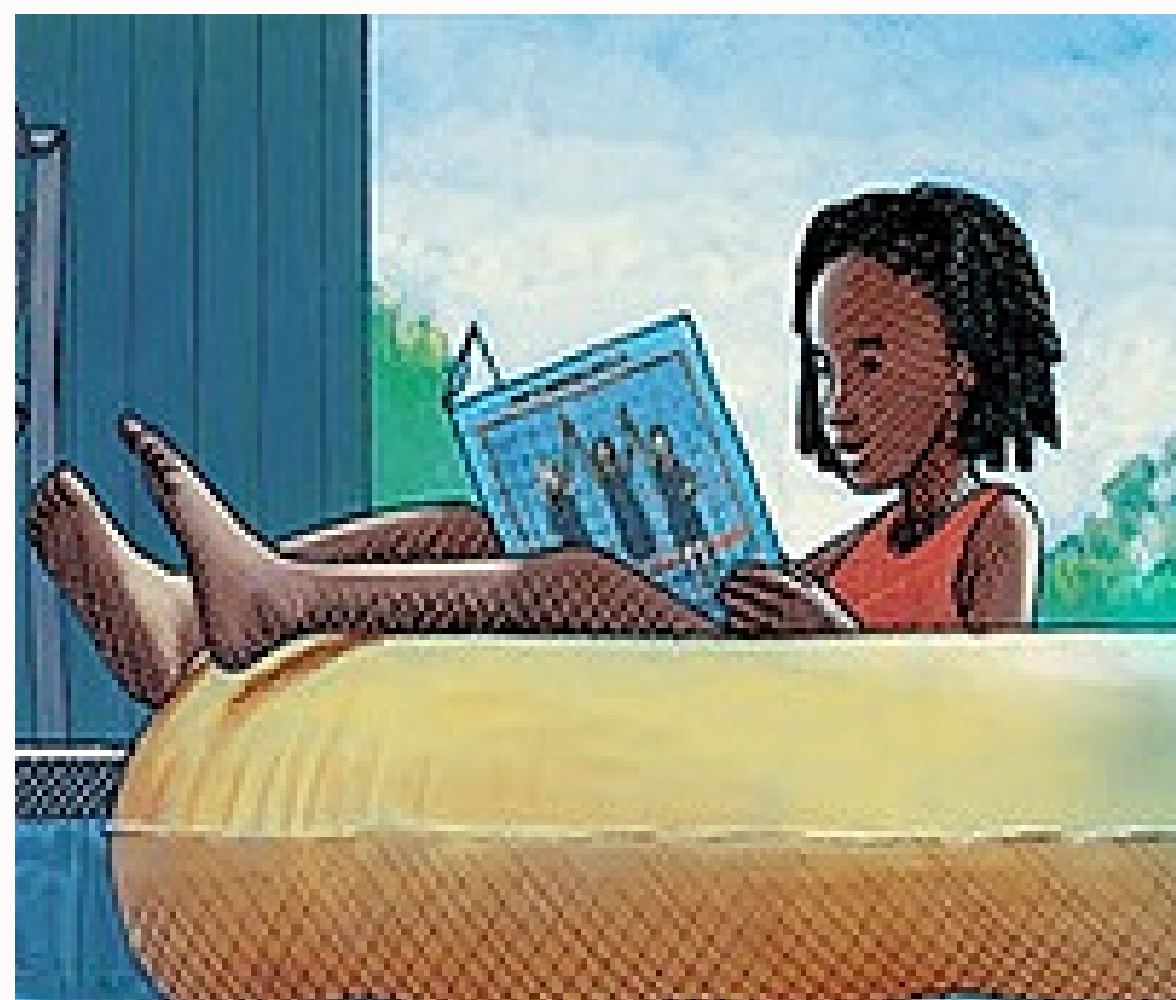
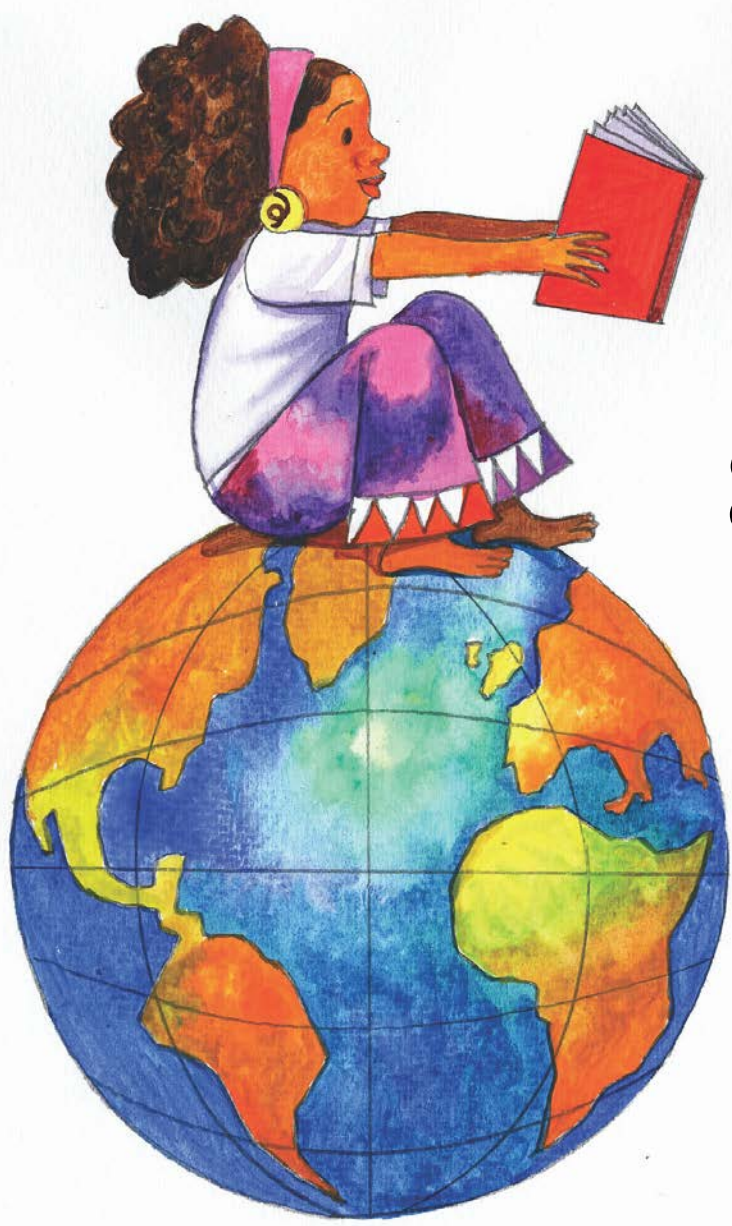
7 Encourage students to use the library. Keep accurate records of books checked out to assist us in our library monitoring program.

8 Foster strong relationships with the parent community and encourage parents to read to/with their kids at home as well as volunteer at the library.

9 Actively work to develop and sustain a habit of reading among students. Sample activities promoting a literate environment include: Drop Everything and Read; Read Across Jamaica Day; Reading competitions; Read-Aloud in class; Set aside reading time; Book clubs and reading groups; Inviting authors and speakers (including parents into class). Any activity that promotes a culture of reading is great!

10) Establish a school committee responsible for library governance, ongoing maintenance and sustainability

**** The above list is not intended to be an exhaustive list. It is simply meant to be a guide.**





READING OWLS INTERNATIONAL
Creating Readers... for Life

**PO Box 2881
Attleboro, MA 02703
(201) 500-OWLS**



ALL RIGHTS RESERVED



ROI